



ModSpace®

Designer Office: (24' x 40' – 960 sq. ft.)



Specifications

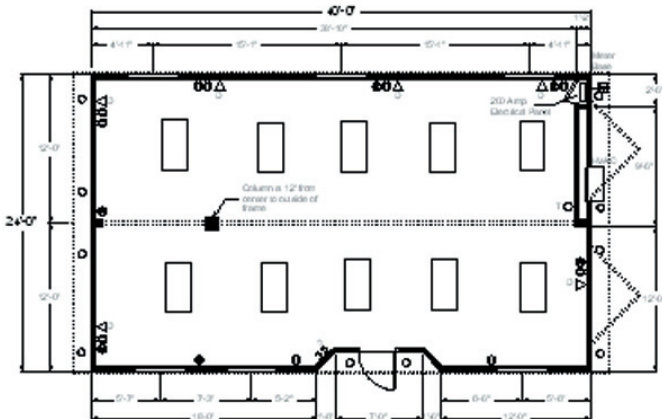
- 24' x 40' building size;
24' x 44' overall size (w/towing hitch)
- 960 square feet of common space
- Electric heat and air conditioning
- 100 lbs. per square foot floor load

Features

- Innerseal wood panels or metal sided
- Recessed entry
- Vinyl trimmed windows
- High-quality vinyl floors
- Recessed, diffused lighting
- HVAC system
- 4' demountable hitch

Optional Features

- Private offices
- Skirting
- Furniture
- Pre-wiring
- Decks, steps and ramps
- Finance / Purchase - New or Used
- Washroom packages



* Overall length and width may exceed box size. All dimensions are nominal

Floor plans may vary. Other sizes, floor plans, configurations and specifications are available. Wood, vinyl and metal exteriors, skirting and other customization of features, options and finishes are available upon request.

All features noted are ModSpace standards. Specifications may vary by region. Contact your local ModSpace representative for details on unit specifications available in your area.

Need Space? Call ModSpace – your source for modular buildings & storage.
800-451-3951 (Canada) • www.modspace.com

MS_CDDE2440 0309

© 2008 Modular Space Corporation. All rights reserved.

MOBILE OFFICES • MODULAR BUILDINGS • COMPLEXES • CLASSROOMS • STEPS & RAMPS • FURNITURE • RENT/LEASE • BUY – NEW OR USED